

Note: 1) Question No.1 is compulsory.

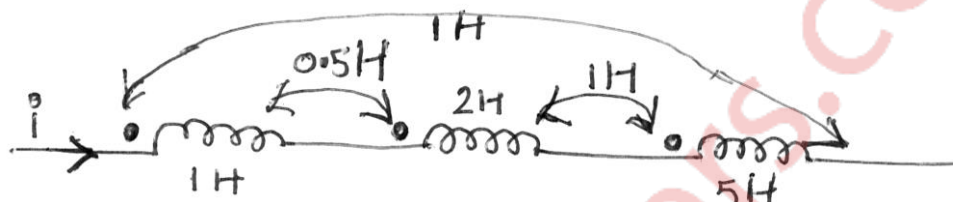
2) Attempt any three questions from remaining five questions.

3) Figures to the right indicate full marks.

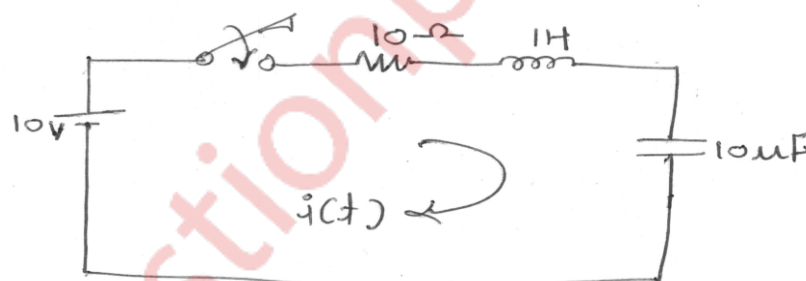
4) Use Smith Chart for transmission line problem.

Q.1) Solve the following questions.

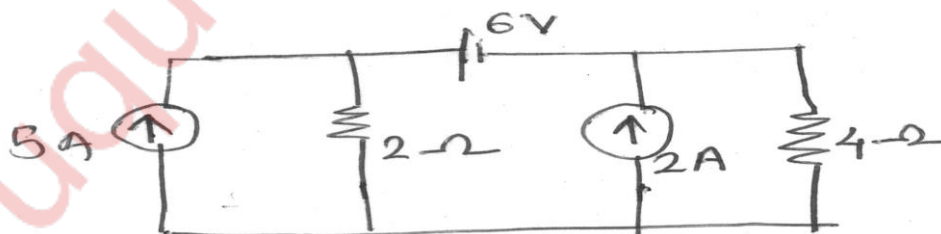
- a) Test for Hurwitz polynomial using continued fraction expansion method. 5M
 $P(s) = S^4 + 7S^3 + 6S^2 + 21S + 8$
- b) Find the equivalent inductance of the network shown 5M



- c) Explain the various types of filters. 5M
 - d) Find ABCD parameters in terms of Z parameters. 5M
- Q.2) a) In the network shown the switch is changed from the position 1 to the position 2 at $t=0$. Steady condition having reached before switching. Find the values i , di/dt and d^2i/dt^2 at $t=0^+$. 8M



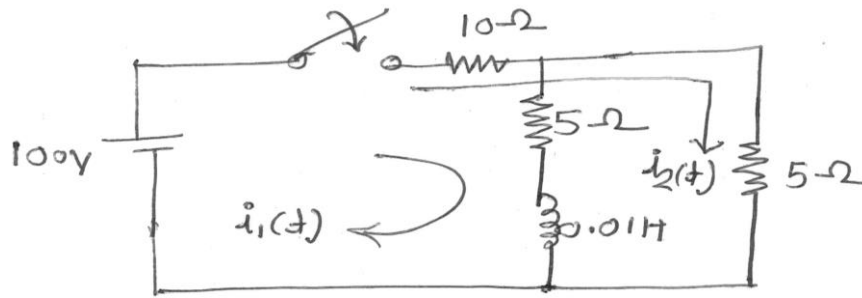
- b) Find the current in the $4\ \Omega$ resistor shown in the network. Use source transformation. 8M



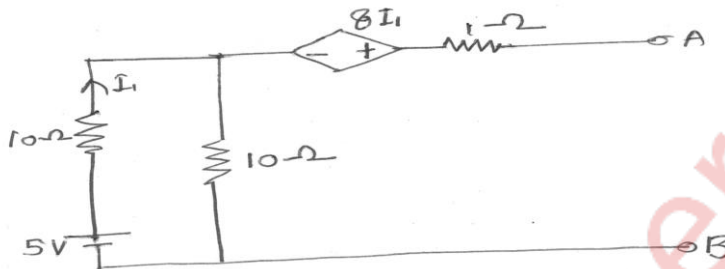
- c) A coil of $20\ \Omega$ resistance has an inductance of $0.2\ H$ and connected in parallel with a condenser of $100\ \mu F$ Capacitance. Calculate the frequency at which this circuit will have as a non-inductive resistance. Find also the value of dynamic resistance. 4M

Q. P. Code: 36418

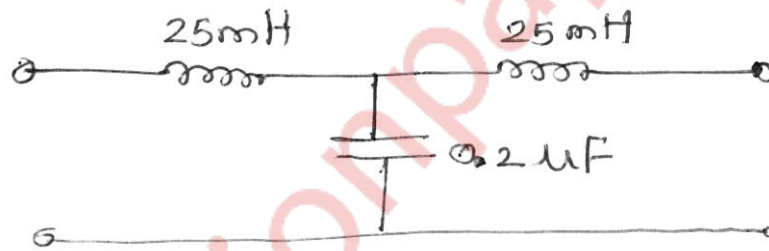
- Q.3) a) In the network shown determine the currents $i_1(t)$ and $i_2(t)$ when the switch is closed at $t=0$. 8M



- b) Find the Thevenin's equivalent of following network. 8M



- c) Find the nominal impedance, cut off frequency and pass band for the network shown. 4M



- Q.4) a) Determine the foster forms of realization of the RC impedance function. 10M

$$Z(s) = \frac{2(s+2)(s+4)}{(s+1)(s+3)}$$

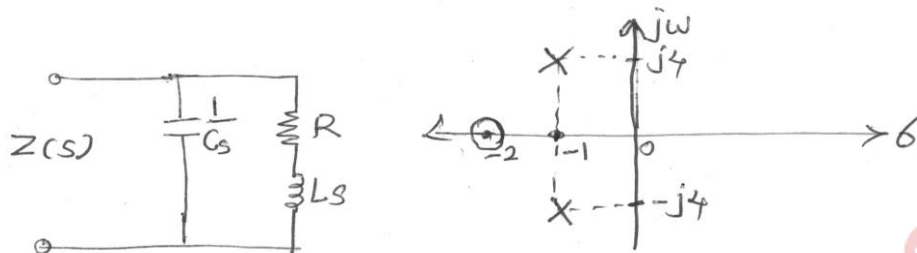
- b) Test for positive real function 10M

i) $F(s) = \frac{3(s+3)(s+5)}{(s+1)(s+4)}$

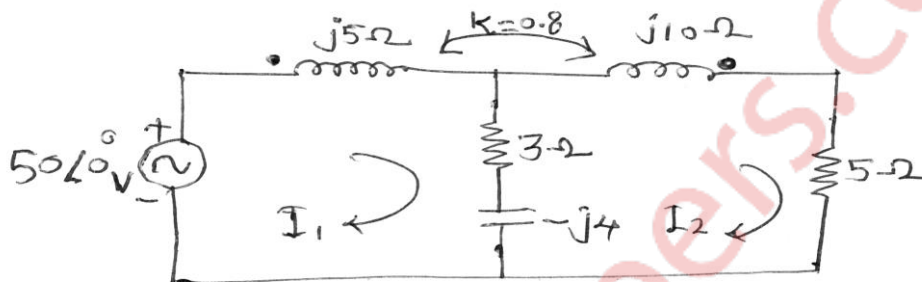
ii) $F(s) = \frac{s^3 + 6s^2 + 7s + 3}{s^2 + 2s + 1}$

Q. P. Code: 36418

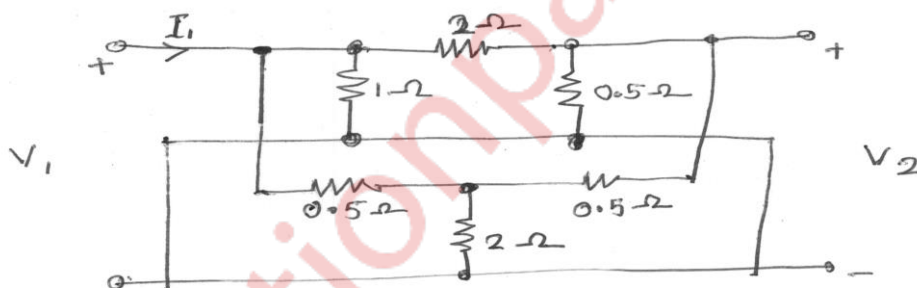
- Q.5) a) The pole zero diagram of the driving point impedance function of the network is shown below. At dc, the input impedance is resistive and equal to 2Ω . Determine the values of R, L and C. 10M



- b) Find the voltage across 5Ω resistor in the network shown below. $K=0.8$ coefficient of coupling. 10M



- Q.6) a) Find Y parameters for the given network. 10M



- b) For the shown network find V_1 and V_2 . 10M

